



## 15 Pearson Street Cremorne

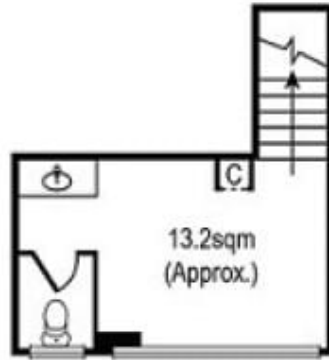
**\*\*\* UNDER OFFER \*\*\*WELL PRESENTED  
SHOWROOM/OFFICE/WAREHOUSE**

Wilson Commercial are pleased to present 15 Pearson Street, Cremorne for Lease. Great opportunity to secure your next location in the heart of Cremorne. Located off Church Street and in close proximity to Swan Street's premier commercial and lifestyle precinct.

- Floor area: 138.5 sqm approx..
- Open Plan with kitchenette and toilet facilities
- 150m to East Richmond Station and Church Street trams
- Available NOW

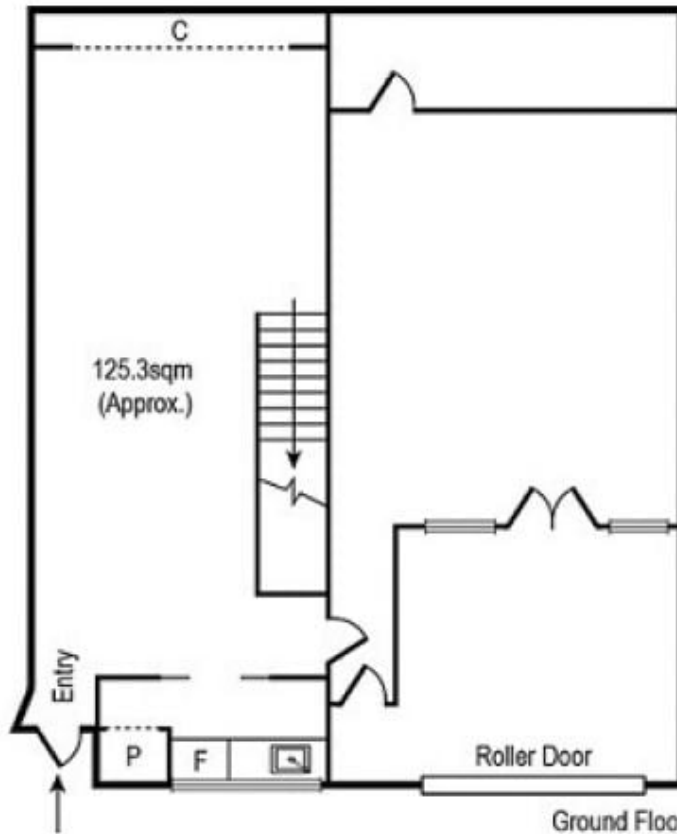
Nicole Scrofani  
0411 224 451  
nscrofani@wilsonagents.com.au

Lan Nguyen  
0421 410 466  
languyen@wilsonagents.com.au



TOTAL SQM = 138.5sqm  
(Approx.)

First Floor



Ground Floor