

**16/11 Fulton Street St Kilda East**

**2** **1** **1**

## Everything Like New - Nothing Left To Do

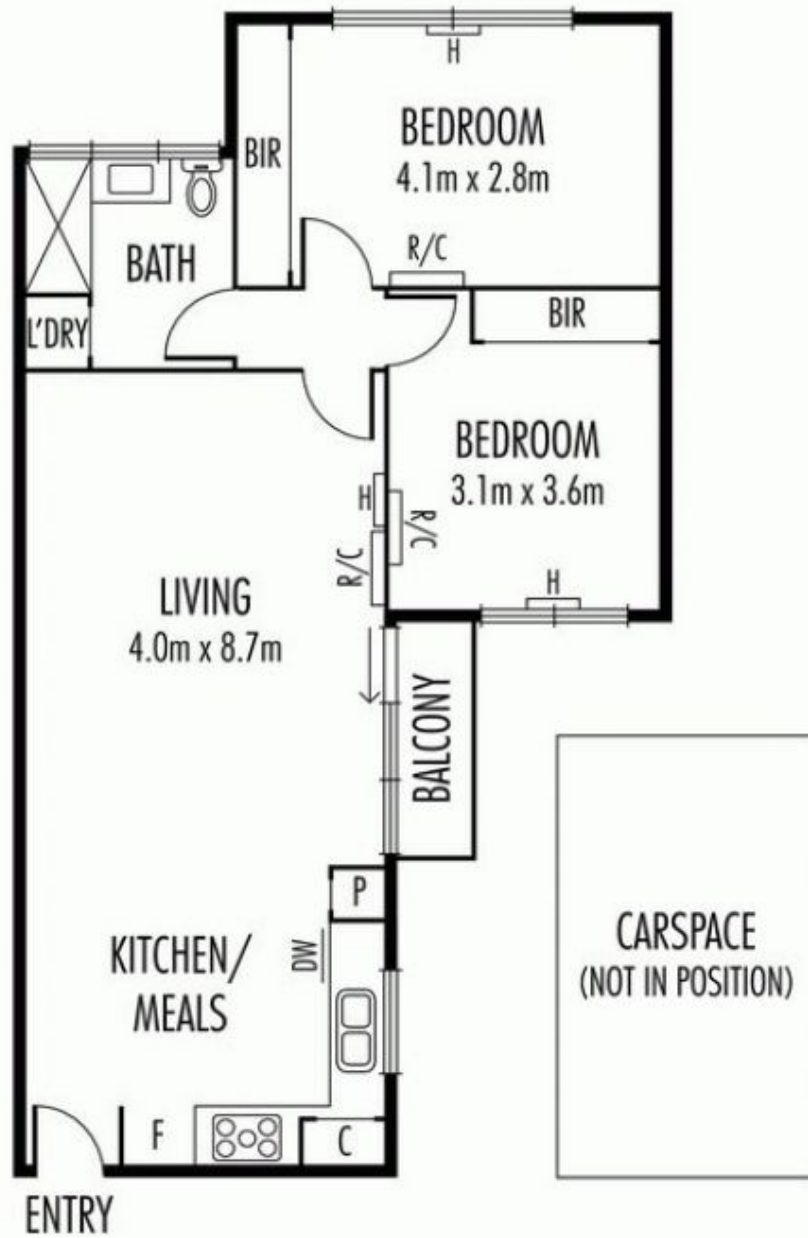
This unit has the lot. Redesigned & opened up to create one huge open-plan space, it's classy, contemporary & great for entertaining with enormous living / dining, integrated stone kitchen with quality appliances, gas cooking, dishwasher, two bedrooms with built-in robes, shmick bathroom with designer pizzazz & washing machine facilities, west-facing balcony and parking.

An extensive list of features include timber flooring, hydronic heating PLUS 3 split system air conditioners, private storage room.

All this in a fantastic location close to Dandenong Road trams, Alma Park & the thriving Windsor end of Chapel Street with its bars, lively cafés, restaurants & eclectic selection of shops.

NOTE: Furniture not included

Peter Fein  
0418528888  
[peter@wilsonagents.com.au](mailto:peter@wilsonagents.com.au)



Disclaimer: Please note plans are indicative only and not drawn to exact scale. All dimensions are approximate. Potential buyers should view the property in person.