



## 29a Clifton Street CAULFIELD EAST

4 3 2

### A Perfect New Family Sensation

Discover unparalleled quality and elegance in this brand-new townhouse, designed with house-like proportions and a seamless, light-filled floorplan. From the moment you enter, the stunning engineered European Oak floors set the tone for the exceptional craftsmanship that follows.

The oversized open-plan living and dining area effortlessly transitions to an exquisite outdoor entertaining space, framed by beautifully landscaped gardens?perfect for hosting and relaxing in style.

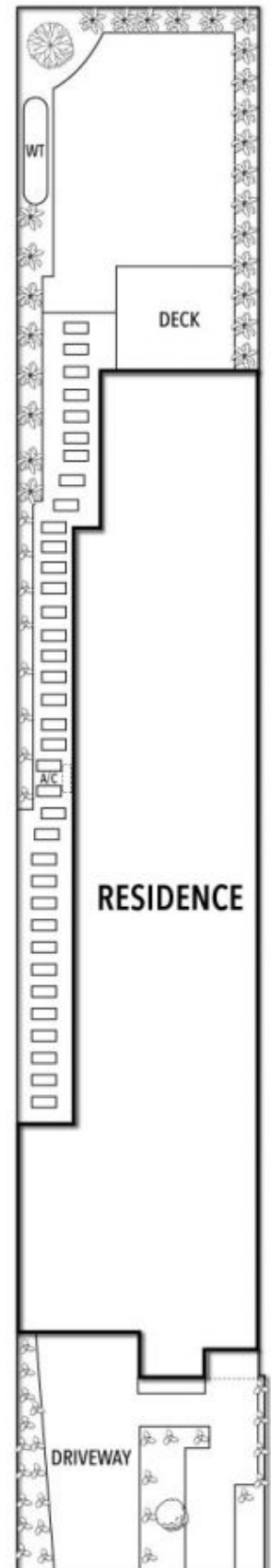
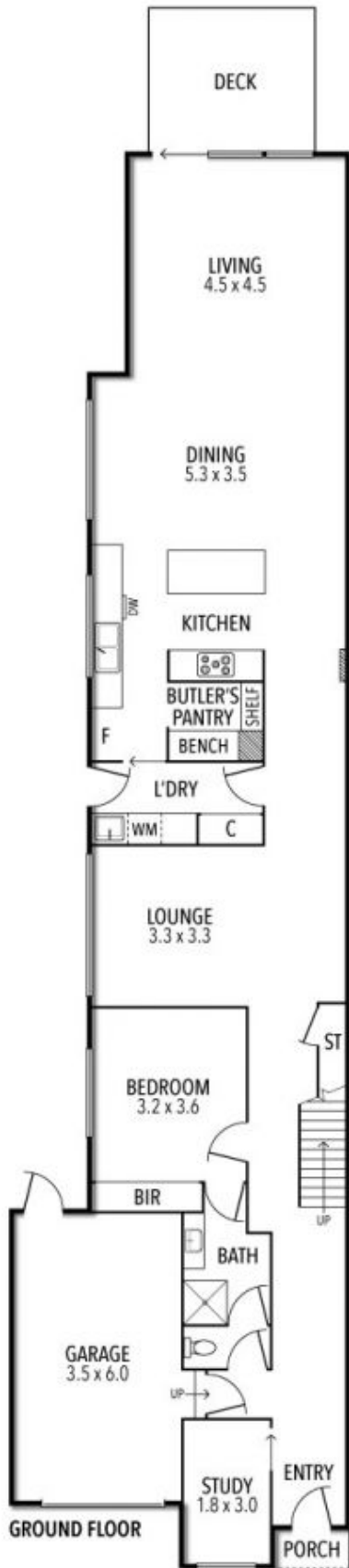
At the heart of the home, the gourmet stone kitchen stands out with its central island, top-of-the-line appliances, and bespoke soft-close cabinetry, all illuminated by tasteful lighting.

On the ground level, you'll find a formal living area, a fourth bedroom with built-in robes, a study, a luxurious fully tiled ensuite, and a fully equipped laundry.

Joey Eckstein  
0419419199  
jeckstein@wilsonagents.com.au

Peter Fein  
0418528888  
peter@wilsonagents.com.au

## 29A Clifton Street, Caulfield East



This plan has been prepared for marketing purposes only. Please note that all measurements & angles are approximate only, so it is strongly advised that all interested parties should undertake their own investigation into the accuracy of the supplied information. No representations or warranties of any nature whatsoever are given or attended.