



1/50 Fitzroy Street St Kilda

2 

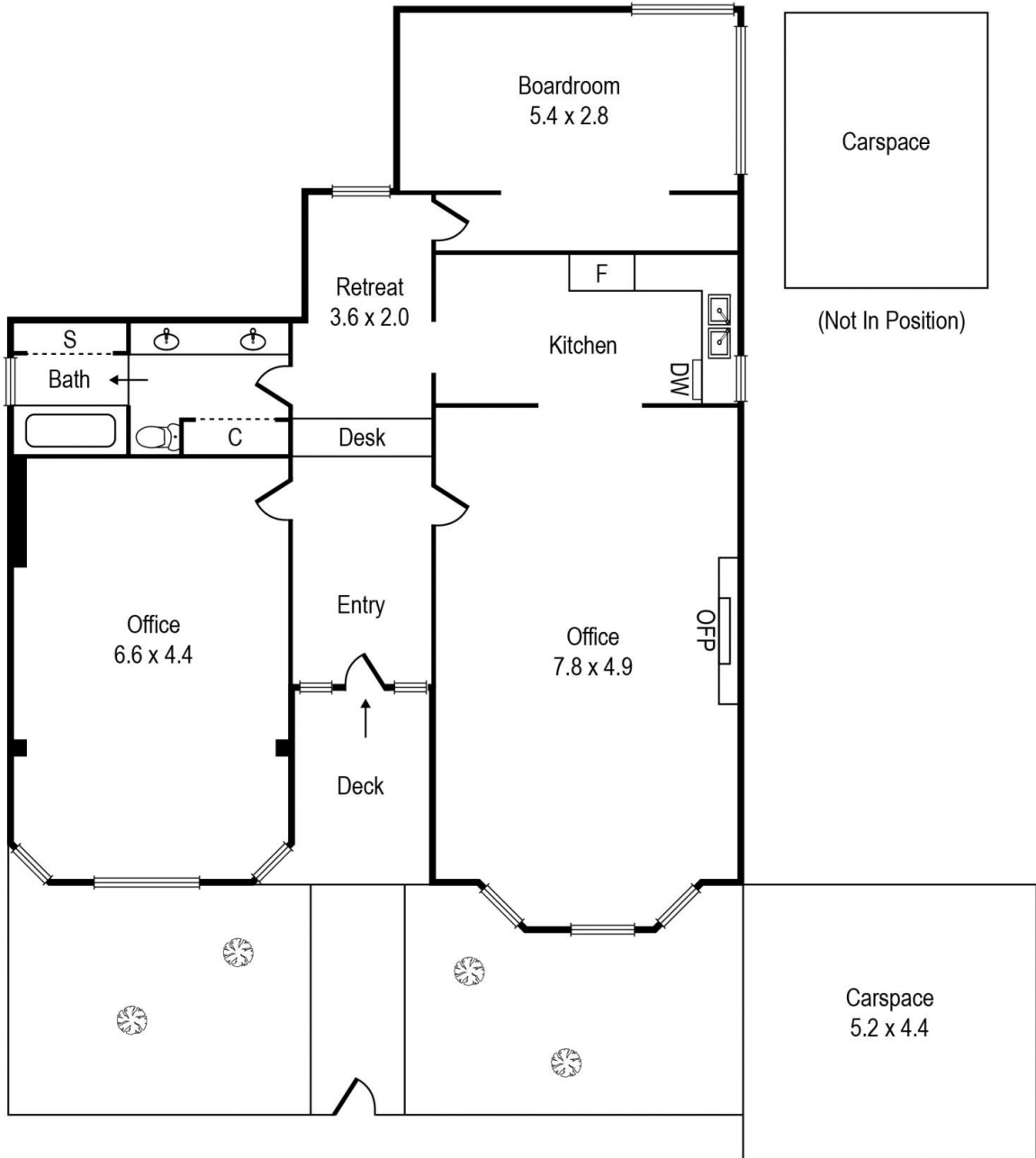
Prestigious Ground Level Double Fronted Victorian offices

\$65,000 p.a. + GST + Outgoings

- Historic "Farndon" Circa 1865
- Own garden secure courtyard entry
- Area 130 m2 approx
- Zoning Commercial 1 Mixed Use
- On site parking for 2 cars
- Palatial proportions and ornate 12 ft ceilings
- Hydronic Heating
- Flexible lease terms available - \$65k Plus Outgoings & GST

Adam Guest
0425 288 888
aguest@wilsonagents.com.au

Inspection by Appointment



TOTALSQM= 130sqm (approx)