



297 Bay Street Port Melbourne

Prominent Corner Retail Shop/Office

Wilson Commercial are pleased to offer for lease 297 Bay St, Port Melbourne.

This high-profile corner retail premises boast extensive glass shop front exposure, and ideally situated on a busy corner of Bay and Bridge Streets, known for their foot traffic and visibility. Proximity to notable tenants including Coles Supermarket, Chemist Warehouse, Hurricane Handsome, Domino's, Telstra, Banks, Bunnings and various retailers.

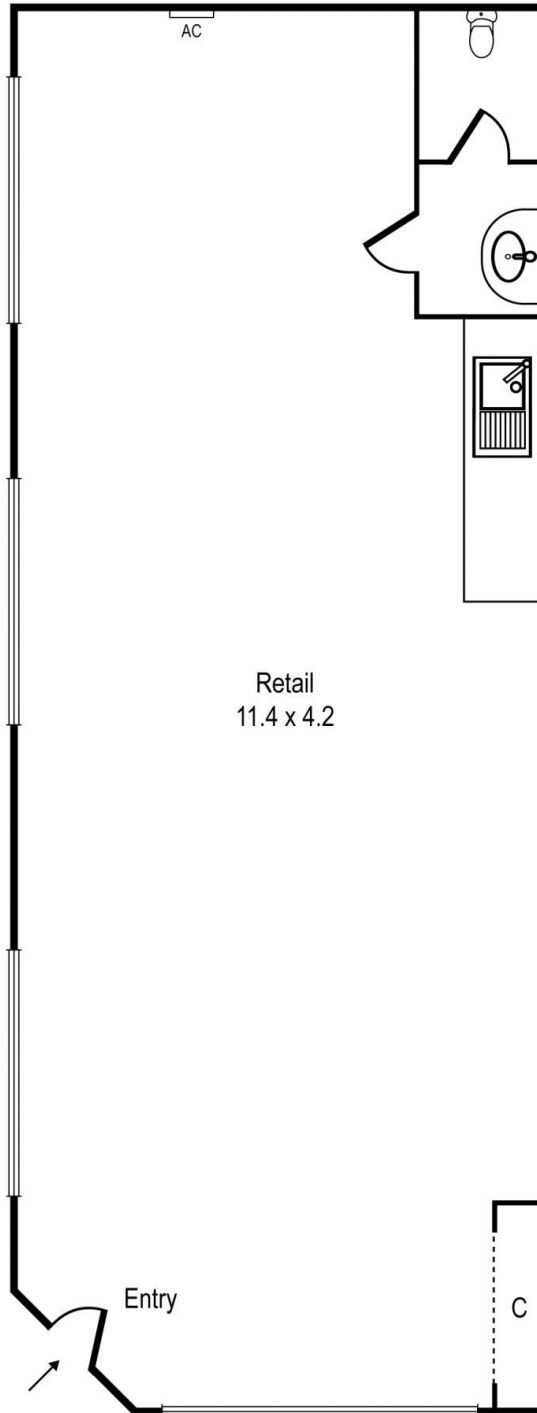
Key Features:

- Floor Area - 51 sqm approx
- Prime location with high exposure
- Suit Variety of Uses (STCA)
- Airconditioning/Heating
- Easy access to Public Transport
- Rent - \$39,000 p.a. + GST + Outgoings
- Available Early November 2024

\$39,000 + outgoings & GST

Lan Nguyen
0421 410 466
Inguyen@wilsonagents.com.au

Nicole Scrofani
0411 224 451
nscrofani@wilsonagents.com.au



TOTAL SQM = 48sqm (Approx.)